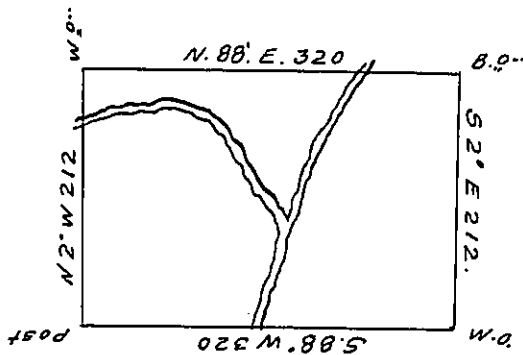


John Wilcocks

John Wigton



Samuel Wetherell

Richard Whitehead

The above is a draught of a Survey made on the 8th of June 1796. in pursuance of a Warrant granted William Whiteside on the 14th Aprile 1792. Situated on the Waters of Big Beaver Creek in Alleghany County. Containing four hundred Acres and Allowance of six per Centum. Call(obl.) Ninetieth.

Daniel Brodhead Esqr.
 Surveyor General of Penna. }

Thomas Stokely
 D.S.

IN TESTIMONY that the above is a copy of the original remaining on file in the Department of Internal Affairs of Pennsylvania, made conformably to an Act of Assembly approved the 16th day of February, 1833, I have hereunto set my Hand and caused the Seal of said Department to be affixed at Harrisburg, this twenty fifth day of June 1907.

Henry Howick
 Secretary of Internal Affairs.